

# CERTEX

## NEW PRODUCT

X100 BRAND SHACKLES



SAFETY BOLT  
ANCHOR SHACKLES



SCREW PIN  
ANCHOR  
SHACKLES

- Approved for Overhead Lifting
- Forged Alloy Steel
- Quenched and Tempered
- Carbon Steel Bow with Alloy Oversized Pin
- Pin is Powder Coated Blaze Orange
- Breaking Strength to Working Load Limit Ratio 6:1
- Embossed Markings: X100 Brand, Size, Working Load Limit, Lot Trace Code

X100®

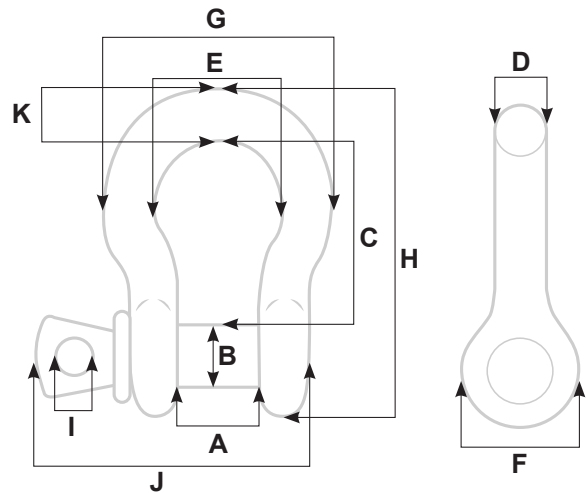
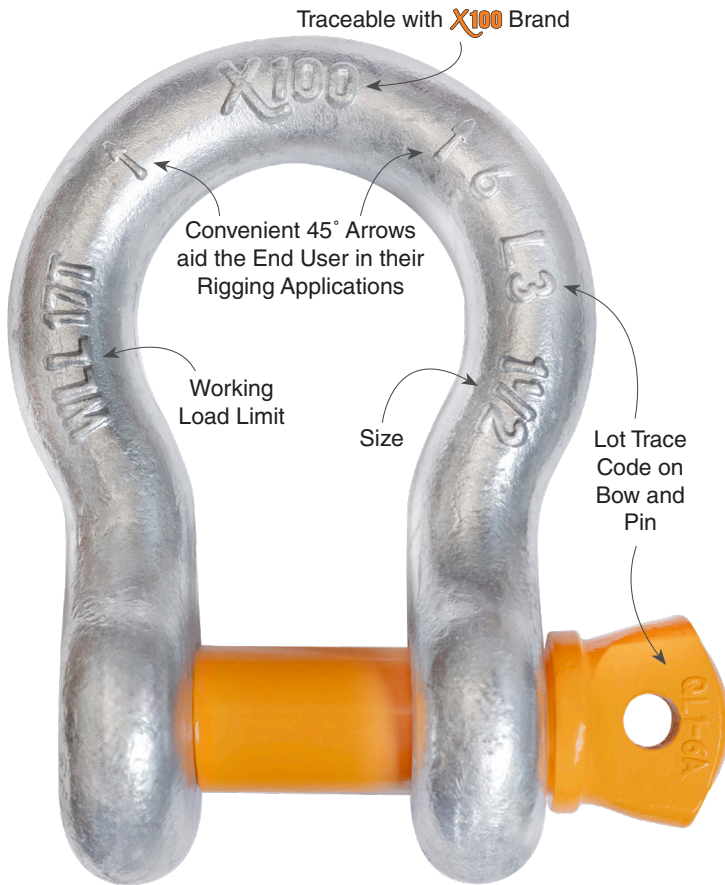
# X100<sup>®</sup> LOAD RATED SHACKLES

BY **ADVANTAGE**

**APPROVED FOR OVERHEAD LIFTING**

## SCREW PIN ANCHOR SHACKLES

- Approved for Overhead Lifting
- Drop Forged
- Quenched and Tempered
- Carbon Steel Bow with Alloy Oversized Pin
- Pin is Powder Coated Blaze Orange
- Breaking Strength to Working Load Limit Ratio 6:1
- Embossed Markings: X100 Brand, Size, Working Load Limit, Lot Trace Code



SIZE	STOCK NUMBER	PIN DIA. (IN.)	DIMENSIONS (IN.)											WEIGHT/PIECE (TONS)	WORKING LOAD LIMIT (LBS.)
			A	B	C	D	E	F	G	H	I	J	K		
3/16"	XSPA187	1/4	.38	.25	.88	.19	.60	.56	.98	1.47	.16	1.14	.19	.05	.33
1/4"	XSPA250	5/16	.47	.31	1.13	.25	.78	.61	1.28	1.84	.19	1.43	.25	.12	.50
5/16"	XSPA312	3/8	.53	.38	1.22	.31	.84	.75	1.47	2.09	.22	1.71	.31	.18	.75
3/8"	XSPA375	7/16	.66	.44	1.44	.38	1.03	.91	1.78	2.49	.25	2.02	.38	.31	1.0
7/16"	XSPA437	1/2	.75	.50	1.69	.44	1.16	1.06	2.03	2.91	.31	2.37	.44	.49	1.5
1/2"	X1SPA500	5/8	.81	.63	1.88	.50	1.31	1.19	2.31	3.28	.38	2.69	.50	.74	2.0
5/8"	XSPA625	3/4	1.06	.75	2.38	.63	1.69	1.50	2.94	4.19	.44	3.34	.69	1.44	3.25
3/4"	XSPA750	7/8	1.25	.88	2.81	.75	2.00	1.81	3.50	4.97	.50	3.97	.81	2.16	4.75
7/8"	XSPA875	1	1.44	1.00	3.31	.88	2.28	2.09	4.03	5.83	.50	4.50	.97	3.37	6.50
1"	XSPA100	1 1/8	1.69	1.13	3.75	1.00	2.69	2.38	4.69	6.56	.56	5.13	1.06	5.30	8.50
1 1/8"	XSPA1125	1 1/4	1.81	1.25	4.25	1.16	2.91	2.69	5.16	7.47	.63	5.71	1.25	7.00	9.50
1 1/4"	XSPA1250	1 3/8	2.03	1.38	4.69	1.29	3.25	3.00	5.75	8.25	.69	6.25	1.38	9.60	12.0
1 3/8"	XSPA1375	1 1/2	2.25	1.50	5.25	1.42	3.63	3.31	6.38	9.16	.75	6.83	1.50	12.6	13.5
1 1/2"	XSPA1500	1 3/4	2.38	1.63	5.75	1.54	3.88	3.63	6.88	10.00	.81	7.33	1.62	17.35	17.0
1 3/4"	XSPA1750	2	2.88	2.00	7.00	1.84	5.00	4.19	8.86	12.34	1.00	9.06	2.25	27.8	25.0
2"	XSPA200	2 1/4	3.25	2.25	7.75	2.08	5.75	4.81	9.97	13.68	1.22	10.35	2.40	43.0	35.0
2-1/2"	XSPA2500	2-3/4	4.13	2.75	10.50	2.71	7.25	5.69	12.87	17.84	1.38	13.00	3.13	83	55

According to Federal Specification RR-C-271d, Type IV A, Grade A, Class 2. Ultimate load is 4 times the Working Load Limit.

**DO NOT EXCEED WORKING LOAD LIMIT.**

**CERTEX**

WWW.CERTEX.COM | (800) 882-9118

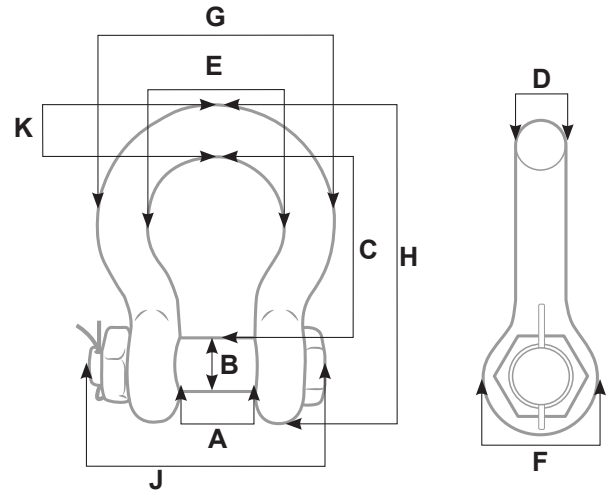
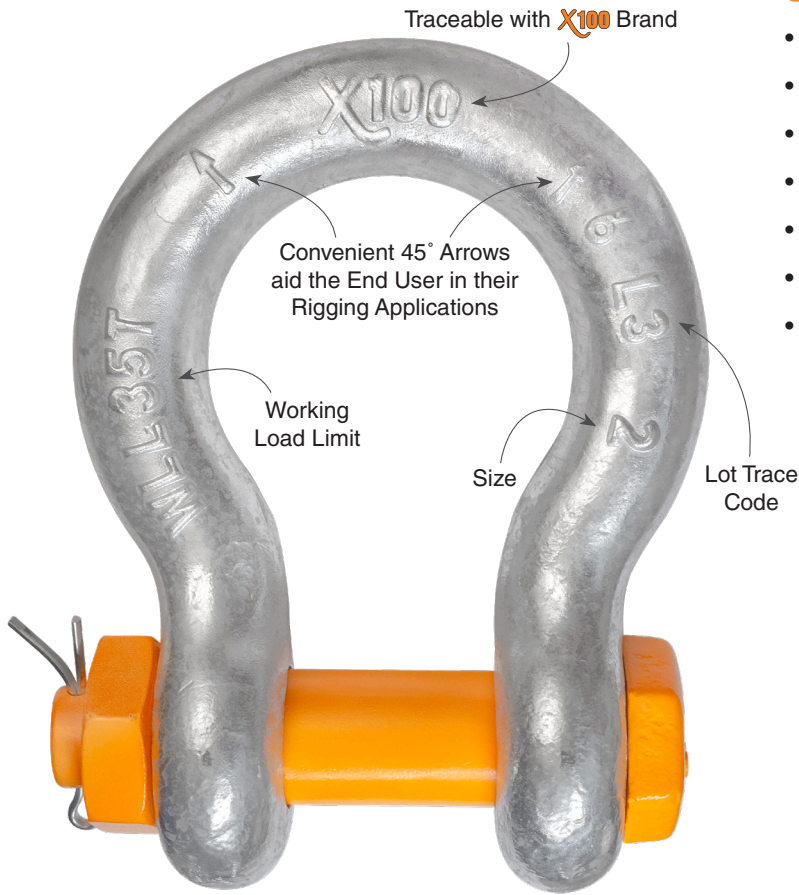
# X100<sup>®</sup> LOAD RATED SHACKLES

BY **ADVANTAGE**

**APPROVED FOR OVERHEAD LIFTING**

## SAFETY BOLT ANCHOR SHACKLES

- Approved for Overhead Lifting
- Drop Forged
- Quenched and Tempered
- Carbon Steel Bow with Alloy Oversized Pin
- Pin is Powder Coated Blaze Orange
- Breaking Strength to Working Load Limit Ratio 6:1
- Embossed Markings: X100 Brand, Size, Working Load Limit, Lot Trace Code



SIZE	STOCK NUMBER	PIN DIA. (IN.)	DIMENSIONS (IN.)											WEIGHT/PIECE (TONS)	WORKING LOAD LIMIT (LBS.)
			A	B	C	D	E	F	G	H	I	J	K		
1/2"	XSAS500	5/8	2.00	.92	.88	.19	.60	.56	.98	1.47	.16	1.14	.19	.92	2.00
5/8"	XSAS625	3/4	3.25	1.55	1.13	.25	.78	.61	1.28	1.84	.19	1.43	.25	1.55	3.25
3/4"	XSAS750	7/8	4.75	2.53	1.22	.31	.84	.75	1.47	2.09	.22	1.71	.31	2.53	4.75
7/8"	XSAS875	1	6.50	4.24	1.44	.38	1.03	.91	1.78	2.49	.25	2.02	.38	4.24	6.50
1"	XSAS100	1 1/8	8.50	5.88	1.69	.44	1.16	1.06	2.03	2.91	.31	2.37	.44	5.88	8.50
1 1/8"	XSAS1125	1 1/4	9.50	7.75	1.88	.50	1.31	1.19	2.31	3.28	.38	2.69	.50	7.75	9.50
1 1/4"	XSAS1250	1 3/8	12.0	11.65	2.38	.63	1.69	1.50	2.94	4.19	.44	3.34	.69	11.65	12.0
1 3/8"	XSAS1375	1 1/2	13.5	15.15	2.81	.75	2.00	1.81	3.50	4.97	.50	3.97	.81	15.15	13.5
1 1/2"	XSAS1500	1 3/4	17.0	18.75	3.31	.88	2.28	2.09	4.03	5.83	.50	4.50	.97	18.75	17.0
1 3/4"	XSAS1750	2	25.0	30.45	3.75	1.00	2.69	2.38	4.69	6.56	.56	5.13	1.06	30.45	25.0
2"	XSAS200	2 1/4	35.0	45.70	4.25	1.16	2.91	2.69	5.16	7.47	.63	5.71	1.25	7.00	9.50

According to Federal Specification RR-C-271d, Type IV A, Grade A, Class 3. Ultimate load is 4 times the Working Load Limit.